

petMAP+ *II*

ETCO₂

Operator's Manual



Now your petMAP+*II*
can measure ETCO₂



www.petmap.com

Developed by:
RAMSEY
MEDICAL INC

Manufactured,
Distributed and
Serviced by:
cardio
COMMAND 

This manual applies to the operation of the CO2 Module (REF# 9027), available as an option with the petMAP+II multi-parameter monitor. The CO2 Module requires a petMAP+II to be useful. Read this manual and the petMAP+II manual completely before using the equipment.

petMAP+II is to be operated by qualified personnel only. Before use, familiarize yourself with the device and read the manuals, including all warnings and cautions. The user should check that the petMAP+II, along with its accessories, is functioning both safely and effectively prior to use.

COPYRIGHT © 2012-2018 Ramsey Medical, Inc.

All rights reserved. No portion of this manual may be reproduced without the written permission of Ramsey Medical, Inc.

CO2 Module OPERATOR'S MANUAL

TABLE OF CONTENTS

	Page
Introduction	
Device Description	5
Intended Uses	5
Configurations & Accessories	6
Symbols, Warnings & Cautions	7
EMC Declaration	10
Device Overview and Operating Instructions	
Controls & Connections	11
Operating Instructions/ User Selections	12
Alarms	16
Maintenance	18
Troubleshooting	19
Warranty/Service	20
Specifications	21

INTRODUCTION

Device Description

petMAP+II is a small, lightweight and portable battery operated monitoring device designed for veterinary use. In its various base unit configurations, it is capable of measuring blood pressure (systolic, diastolic and mean arterial pressures), heart rate, temperature and oxygen saturation (SpO₂). The measured values are displayed and trended on the device continuously. Data trended on the petMAP+II can optionally be saved on a SD memory card via the petMAP+II's integrated SD memory card slot.

Modules for ECG and CO₂ can also be purchased and added to the base unit.

The CO₂ Module incorporates a mainstream type of CO₂ sensor for use on intubated patients and allows the petMAP+II to display the capnograph as well as the CO₂ values: ETCO₂ (End Tidal CO₂), InspCO₂ (Inspired CO₂), RtCO₂ (Realtime CO₂) and RRCO₂ (Respiration Rate from the CO₂ waveform). The CO₂ sensor resides on the airway and has a nine-foot cable that plugs into the connector labeled "CO₂" on the side of the petMAP+II. The Module includes two airway adapters, one for larger endotracheal (ET) tubes and one for smaller ET tubes.

Intended Uses

petMAP+II is intended for use on veterinary patients when measuring or monitoring of blood pressure, heart rate, temperature and/or SpO₂ is desired. When configured with a mainstream CO₂ Module, the petMAP+II will also display the CO₂ waveform, CO₂ values and RRCO₂. It can be used on a wide variety of veterinary patients, but is primarily designed for companion animals. When equipped with the CO₂ module, petMAP+II can be used on anesthetized patients with ET tubes. Applications include use for surgical, ICU and trauma monitoring as well as use during procedures (imaging, dentals, etc.) in which an ET tube is used.

Configurations & Accessories

The following table summarizes the standard accessories and optional accessories available for the petMAP+II CO2 Module:

	Product Code	Description
Standard Accessories (included with the Module)	9027 CO2 Module	<ul style="list-style-type: none">➤ CO2 mainstream sensor with Connector Cable (≈9')➤ 2 airway adapters (large & small)➤ Operator's Manual
	9034	Large Airway Adapter
	9035	Small Airway Adapter

SYMBOLS

Caution Symbol



Consult Manual Symbol



WARNINGS & CAUTIONS (Please read and understand)



The petMAP+II and its CO₂ Module are intended for VETERINARY USE ONLY. Do not use on a human patient.



The user should be aware that erroneous measurement of ETCO₂ due to any cause (eg., improperly placed or secured ET tube, airway disconnect, equipment or sensor damage, excess humidity in the ventilation circuit, electronic failure, etc.) could lead to potentially less than effective or inappropriate ventilator adjustments or other inappropriate changes or interventions. Always confirm that the CO₂ monitoring system is setup and connected properly and correlate unexpected or unexplained changes in CO₂/capnograph readings with the clinical circumstances and environment and an arterial blood gas measurement comparison.



Use of an Electrosurgical Unit (ESU) can potentially result in interference on the CO₂ trace and the CO₂ numeric values. If ESU interference adversely impacts the CO₂ waveform, do not use the CO₂ data until the CO₂ waveform has been stable for 10 seconds or more after ESU use. The BP and SpO₂ are typically not adversely affected by ESU usage, but under certain circumstances the ESU could adversely affect them. Always assure that the ESU ground plate is well placed on the patient and placed distant from the ECG electrodes.



The following factors can influence the ETCO₂ measurement: nitrous oxide, elevated oxygen levels, barometric pressure, vapor or patient secretions, halogenated agents, aerosolized pharmaceuticals or nitric oxide.



Do not use the module if it does not respond as it is intended and expected to perform, if it is wet or damp, or if the module or the cable or the connector appears to have been dropped or damaged in any way.



A loss of the ETCO₂ reading, an acute change in the CO₂ reading or waveform or a diminished reading or waveform may be the result of excessive moisture or secretions on the two airway adapter “windows” that are the infrared light path that is used to measure the CO₂ level. Remove the airway adapter from the monitoring circuit and observe if there is moisture on the “windows”. If so, clean and dry excess moisture and secretions from the inside of the airway adapter, taking care not to damage the clear “windows” of the adapter. Always keep the infrared “windows” in vertical position and level with or above the patient so that secretions do not drain into the sensor.



Do not store the CO₂ Module at temperatures less than 14 degrees F or greater than 131 degrees F. Do not operate the sensor at temperatures less than 50 degrees F or greater than 104 degrees F.



Do not immerse the CO₂ sensor in water or any liquid. If the CO₂ sensor is accidentally wetted, it should be thoroughly dried before use. If the CO₂ Module has been dropped into water or other fluid, it should not be used and should be returned to the manufacturer for service. Never sterilize or immerse the sensor in liquids.



If the CO₂ Sensor has been dropped or damaged in any way, it should be checked by qualified service personnel to ensure proper operation prior to use.



Use of accessories other than those specified by Ramsey Medical may result in danger to the patient, malfunction of the monitoring unit, and additional increased electro-magnetic (EM) emissions or decreased EM immunity of the device.



Follow local governing ordinances and recycling instructions regarding disposal and recycling of device components and packaging



The petMAP+II is not intended for use on patients being imaged with an MRI device since the petMAP device contains magnetically active materials and could result in injury if used or placed too close to an MRI device, even if the MRI is not operating, since the MRI magnet is still active even if not in use.



Do not gas sterilize or autoclave the device.

EMC DECLARATION

The CO2 Module (REF# 9027) has been tested together with the petMAP+II as a system. Please refer to the petMAP+II Manual (R400257) for detailed EMC compliance information.

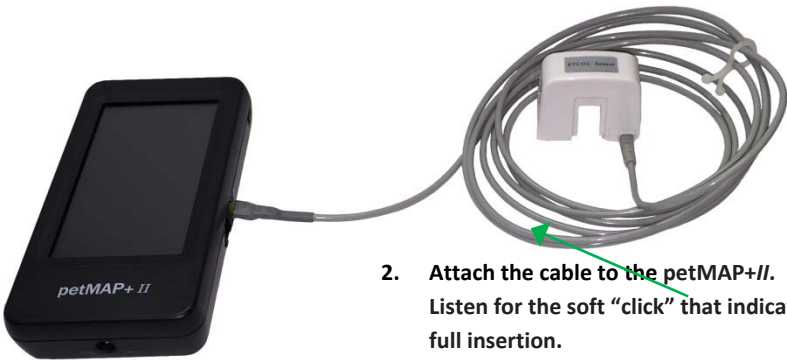
DEVICE OVERVIEW & OPERATING INSTRUCTIONS

Controls & Connections. Note the below diagram for connecting the CO2 Module to the petMAP+II and the patient's respiratory circuit.



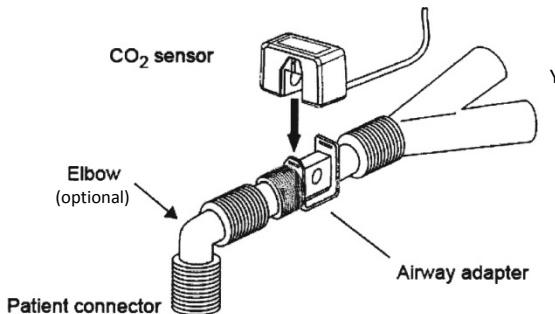
1. Locate the connector labeled "CO2" on the side of the petMAP+II, taking care to avoid plugging the CO2 connector into the larger ECG connector.

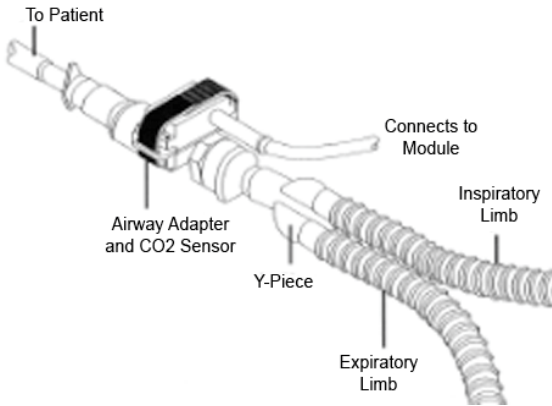
NOTE: If a REF# 9028 petMAP cover is in use, lift the flap to reveal the connector.



2. Attach the cable to the petMAP+II. Listen for the soft "click" that indicates full insertion.

3. Insert an airway adapter into the breathing circuit. Examples:





3. **Attach the sensor to the airway adapter.**
******Note that the airway and sensor must be in the upright vertical position as shown.**

Operating Instructions/User Selections.

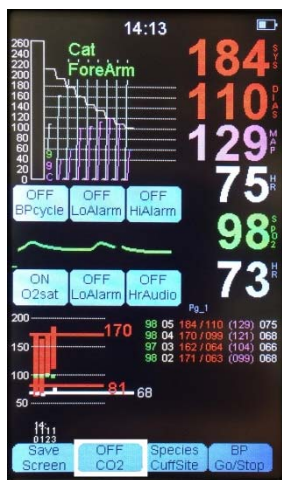
Note 1: The CO2 Module is shipped with the large airway adapter attached to the sensor. The sensor has been “zeroed” with that airway adapter attached prior to shipment and should not need to be zeroed again before use. However, anytime the airway adapter is changed on the sensor, the sensor must be “zeroed” with the new airway adapter in place.

Zeroing the sensor:

1. Ensure no CO2 gas is in the airway adapter.
2. Access the CO2 sensor zero screen on the petMAP+// setup menu by pressing and holding your finger on bottom left quadrant of the touch screen while powering ON the petMAP+// with the power button. Release the touch screen at the count of 10 to enter the CO2 sensor zeroing mode.
3. Observe the on-screen messages for warm-up and zeroing. Both warm-up and zeroing should complete within 2 minutes each.
4. Wait for the petMAP+// to report “Finished Zeroing” on the display—the petMAP+// will automatically power OFF. Power the petMAP+// unit ON and turn on the CO2 function. Verify the displayed instantaneous CO2 value (not the ETCO2 CO2) is 0 or 1, and if not, re-zero the device.

Note 2: During the CO₂ warm-up period, the petMAP+II's programmed altitude is displayed and should be confirmed by the user to be acceptably close to their actual altitude (or elevation). The petMAP+II unit is set by default at time of manufacture to assume a user altitude of 1000 feet (304 meters) which will give CO₂ accuracy within +/- 3 mmHg for user altitudes anywhere from sea level to approximately 2000 feet (610 meters). For best accuracy of CO₂ measurement, the user's current altitude should be set using the Set Altitude/Time/Date option #6 on the setup menu (see the petMAP+II Operator's Manual for instructions to get into the set-up menu or refer to the instructions above). This #6 setup option will allow the user to set the elevation to the nearest 100 feet (30 meters) which will eliminate the potential small offsets mentioned above if the user is substantially different from 1000 feet (304 meters) altitude programmed in as the default altitude at time of manufacture. After changing the altitude, the unit will retain the new altitude until it is changed by the user again.

- 1) Follow the earlier instructions for installing an airway adapter and placing the CO2 sensor on the adapter.

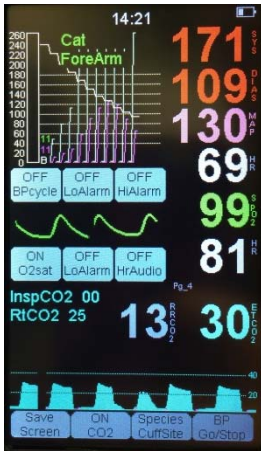


- 2) Turn CO2 ON by pressing the highlighted CO2 ON/OFF button on the petMAP+II.

- 3) This is the petMAP+II screen display as the CO2 sensor is warming up. One should allow 5 minutes for warm-up—note the message counts down from 5 minutes. Note also that during this warm-up time no alerts are displayed or sounded. The warm-up message also displays the altitude setting. To change the altitude, please refer to the petMAP+II Operator's Manual and instructions, above.



- 4) When the warm-up is complete, the petMAP+II display will look like this if Pg_4 is selected, displaying the capnograph, ETCO₂ value and RR/CO₂ (Respiration Rate from CO₂). InspCO₂ (Inspired CO₂) and RtCO₂ (Realtime CO₂) are also displayed.



- 5) Pg_3 is an alternate display format showing a short trend of the BP and other values in addition to the ETCO₂, RR and a shorter capnograph. NOTE: Alternate displays are achieved by touching the screen area in the lower portion of the screen above the bottom row of buttons repeatedly until the desired display is reached.



- 6) When monitoring is complete, turn CO₂ OFF by touching the ON CO₂ button.

Alarms Generated by the CO2 Monitoring System

The following alarms (No Breath, Low CO2 and High CO2) can be generated by the CO2 Module and displayed on the petMAP+// to alert the user to very abnormal CO2 conditions.

NOTE: The levels chosen for high and low ETCO2 alarm trigger points are designed solely as a backup for a vigilant user, to alert the user if they have inadvertently failed to previously detect an adverse patient CO2 level or trend. Consequently, it is imperative for the user to understand that the absence of a CO2 alarm does not mean that the patient's CO2 is appropriate or acceptable for that patient, and the presence of an alarm should not be viewed as anything but an alert that CO2 levels have trended way beyond the normally expected CO2 ranges. As always, the user is expected to detect CO2 problems and correct them long before the alarms have been triggered. For all of the CO2 alarms, there is a startup delay of approximately 5 minutes during the warm-up period where no alarms will sound. After warm-up, there is a delay before sounding the CO2 alarms of approximately 20 seconds to allow the user to detect and correct CO2 conditions without the disturbance of the alarm actually sounding and also to prevent annoying inappropriate alarms for transient events or user initiated changes in CO2 monitoring setup.

CO2 is an important parameter to monitor for assessing the patient's ventilation and physiologic status during anesthesia, and its routine use is highly recommended by monitoring experts. However, CO2 monitoring can be somewhat complex due to its ability to indicate major and minor problems with the patient's breathing, the patient's cardiovascular status, the patient's metabolic status, the ventilation setup/equipment and user techniques. Because of this complexity, the user should educate themselves thoroughly in the CO2 monitoring procedure and the interpretation of the CO2 values and CO2 waveforms. There are many resources in print, in video and on the internet that teach capnography use and interpretation. The user of the petMAP+// CO2 Module is urged to avail themselves of these educational resources early so that they are educated in CO2 monitoring and interpretation before using the device on actual patients.

ALARMS	
No Breathing CO2	<p>The CO2 capnograph waveform amplitude is insufficient for breaths to be detected.</p> <p>Possible causes include: the ventilator is not functioning properly, there is a ventilation tubing disconnect, the ET tube is not in the patient or the patient is not breathing for whatever reason, etc, etc.</p> <p>Identify and correct the problem.</p>
High End Tidal CO2	<p>Displayed when $ETCO_2 > 60$ mmHg</p> <p>This can be caused by the patient not being adequately ventilated due to airway problems, ventilation tubing problems, ventilator settings, bagging frequency and/or by a problem/malfunction with the ventilation system including the setup, the valves, the CO2 absorber or other components. Refer to CO2 monitoring educational material for all causes and cures.</p> <p>Identify the problem(s) and correct.</p>
Low End Tidal CO2	<p>Displayed when $ETCO_2 < 15$ mmHg</p> <p>This can be caused by the patient being over ventilated due to ventilator settings, bagging frequency and/or by a problem/malfunction with the ventilation system including the setup, the valves, the CO2 absorber or other components. Refer to CO2 monitoring educational material for all causes and cures.</p> <p>Identify the problem(s) and correct.</p>

Alarms can be silenced by touching the screen.

The above alarms are self-canceling when the cause of the alarm is resolved.

MAINTENANCE

CO2 Sensor and Connection Cable: Clean as needed with a cloth dampened with 70% isopropyl alcohol or other disinfectant solution. Do not immerse the sensor or cables in any fluid and do not sterilize the sensor.

Airway Adapter: The airway adapter can be cleaned with water and mild detergent and must be thoroughly rinsed and fully dry inside and out before use. The “windows” must be clear and without moisture or contamination of any kind. Shaking the airway adapter will help to remove water from the inside of the adapter.

Note: For the sensor to function properly, the two clear sensor “windows” on the inner portion of the sensor itself and on the airway adapter must be clean and free of contaminants of any sort, including dust, dirt, grease, or moisture. Anything on the sensor or airway windows will render the CO2 reading erroneous, useless and potentially dangerously inaccurate.

TROUBLESHOOTING

Note: Always check the patient condition first before working to correct any perceived monitoring problems! The perceived problem with the CO₂ reading and capnogram monitors may be due to a patient problem, such as not breathing properly or not being ventilated properly which needs to be detected and remedied immediately. Always crosscheck other patient status inputs when there is a perceived problem with any monitor.

Failure to display a usable CO₂ waveform and clinically appropriate numbers can be caused by a number of problems and can usually be fixed by correcting one or more of the following technical/equipment problems after patient problems have been detected and eliminated:

- 1) *Is the CO₂ sensor properly connected to the CO₂ connector on the petMAP+II ?*

Try disconnecting it and then reconnecting it making sure that it is in the “CO₂” connector (not the “ECG” connector) and that it is securely seated and is properly retained in the unit if gently pulled.

- 2) *Are the CO₂ sensor and airway adapter properly placed in the ventilation circuit?*

Make sure the sensor is connected in the breathing circuit close to the patient’s airway (ET tube) and if a ventilator is being used, make sure the sensor is close to the patient and between the patient and the “Y” of the ventilator. Confirm that the ventilation circuit and all of its elements are properly placed and securely connected.

- 3) *Is the automatic ventilator (or the “bagger”) functioning properly?*

Make sure that the respiratory rate and volume are set correctly and are functioning properly.

WARRANTY/SERVICE

Warranty

Ramsey Medical, Inc. warrants that the CO2 Module, when new, is covered by a one-year warranty against defects in materials and workmanship. All warranties begin at the date of original purchase from CardioCommand, Inc. or its authorized distributors.

Airway adapters are warranted to be free from defects in materials and workmanship for 90 days. These items will require periodic replacement due to normal wear.

Ramsey Medical's obligation under this warranty is limited to repairing or, at its option, replacing defective parts or entire units without charge, if such defects occur as a result of normal use with prompt notification within the warranty period.

Damage resulting from inappropriate use or physical abuse is not covered by the warranty.

THERE ARE NO WARRANTIES WHICH EXTEND BEYOND THOSE EXPRESSLY LISTED ABOVE. IN ADDITION, THERE ARE NO WARRANTIES OF MERCHANTABILITY OR FITNESS FOR A PARTICULAR PURPOSE.

Customer Service & Repairs

All units returned for service and/or repairs (warranty and non-warranty) must have a RMA obtained by calling Customer Service at CardioCommand, Inc. The RMA number obtained should be written on the outside of the shipping container and the device should be sent to:

CardioCommand, Inc.
4920 W. Cypress St., Ste. 110
Tampa, FL 33607
Phone: 800-231-6370
813-289-5555
Fax: 813-289-5454

Please include a complete description of the difficulty with all items returned for service and/or warranty claims.

SPECIFICATIONS

For Veterinary Use Only

CO2 Accuracy: 0-40 mmHg ± 2 mmHg
 41-70 mmHg $\pm 5\%$ of reading
 71-100 mmHg $\pm 8\%$ of reading

CO2 Measurement Range: 0 – 150 mmHg/0-19.7%/0-20 kPa

Initialization Time: Capnograph and CO2 numerics displayed in less than 20 seconds, reaching full specifications after 5 minutes of warm-up. Alarms are not active during the warm-up period.

RR Accuracy: $\pm 2\%$; ± 1 BPM

RR Measurement Range: 4-130 BPM

Temperature/Humidity:

Operating: 0°C – 40°C; 10-90% RH
Storage: -40°C – 70°C; <90% RH

Dimensions: Sensor: 2.02" x .86" x 1.58 "
 Cable: Approx. 114"

Weight : .148 lbs

HISTORY OF REVISIONS

Document # & Revision	Date	Comments
R400290-A	09/26/16	Manual Released. ECO 160901
R400290-B	08/03/17	Modified sterilization instructions for airway adapters. ECO 170703
R400290-C	01/09/18	Added self-canceling alarms. ECO 180101

**petMAP+II is
developed by:**

RAMSEY MEDICAL INC

Tampa, FL 33607
USA

petMAP, CritterCuff and RamseyCuff
are registered trademarks of
Ramsey Medical, Inc.

**petMAP+II is manufactured,
distributed and serviced by:**



4920 W. Cypress St., Ste. 110
Tampa, FL 33607

For Customer Service contact CardioCommand, Inc.

Phone: (800) 231-6370
(813) 289-5555
Fax: (813) 289-5454
Website: www.petmap.com
E-mail: support@cardiocommand.com